

Dear Customers

January 2019
NISSEI CORPORATION
Gearmotor Division

Notice regarding dimensional change in capacitor for single-phase motor

Thank you very much for your continued support.

This is to inform the dimensional change in capacitor used for MID SERIES single-phase motor.

■Date

Scheduled to start shipping from April 2019

■Models

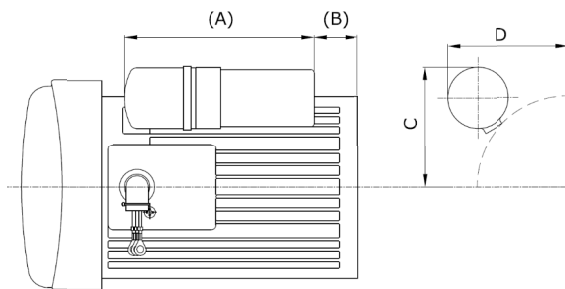
GTR MID SERIES

- Gearmotor / Gearmotor with brake

└ Single-phase 200W(capacitor start) – Standard voltage(100V/50Hz・60Hz)
Double voltage(200V/50Hz・60Hz)

└ Single-phase 400W(capacitor start) – Standard voltage(100V/50Hz・60Hz)
Double voltage(200V/50Hz・60Hz)

■Details (Dimensional Comparison)



Motor Capacity (W)	New・Old	(A) (mm)	(B) (mm)	C (mm)	D (mm)
200	Old	120	28	76	76
	New	(113)	(40)	78	78
400	Old	120	38.5	108	69
	New	(113)	(45)	110	71

■Inquiries

Overseas Sales